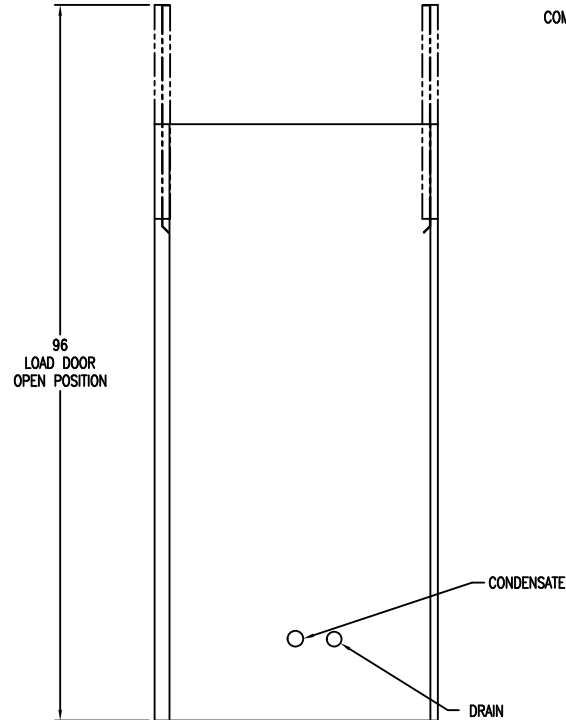
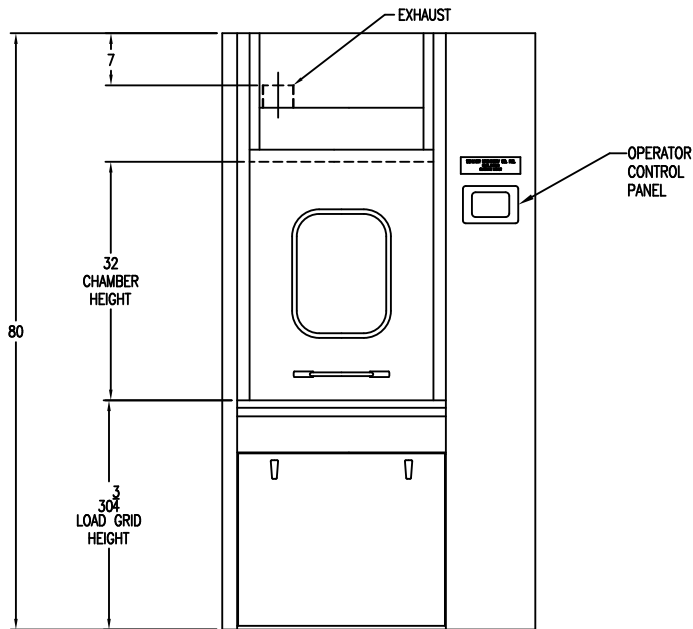


UTILITIES AND SERVICE REQUIREMENTS

ELECTRICAL	??? V/3 PH/60 HZ, 3 WIRE	5 HP
STEAM	1-1/2" NPT	30-80 PSI
	350 LBS/HR PEAK FLOW RATE	
CONDENSATE	1" NPT	
HOT WATER	1" NPT	35 PSI 120 DEG. F.
	51 GALLONS MAX. / LOAD CONSUMPTION	
COLD WATER	3/4" FPT	35 PSI 50 DEG. F., 15 GPM AVG. FLOW
DRAIN	1 1/2" NPT	140 DEG. MAX. TEMPERATURE
	(EFFLUENT COOLING, NON-MONITORED)	
EXHAUST	6" DIA.	
	200 CFM FLOW RATE	
COMPRESSED AIR	1/2" FPT	80 PSI
	4 SCFM FLOW RATE	



NOTICE: All drawings, descriptions, prices, specifications, etc. bearing this notice, together with the information and data contained therein, are the sole and exclusive property of Schlyer Machine. Any disclosure or use thereof not authorized in writing by Schlyer Machine is unlawful and will be prosecuted to the full extent of the law.

DWG NO: B_WSER	DATE: 4/26/12	DRAWING TITLE
APR 01	DATE:	MODEL: BW1020 BOTTLE WASHER
SCALE: 1"=8"	JOB NO:	SCHLYER MACHINE
SHEET: 1 OF 1	NEXT AREA:	814 Warfazer Dr., N. Tonawanda, NY 14120
		PART NO: BW1020