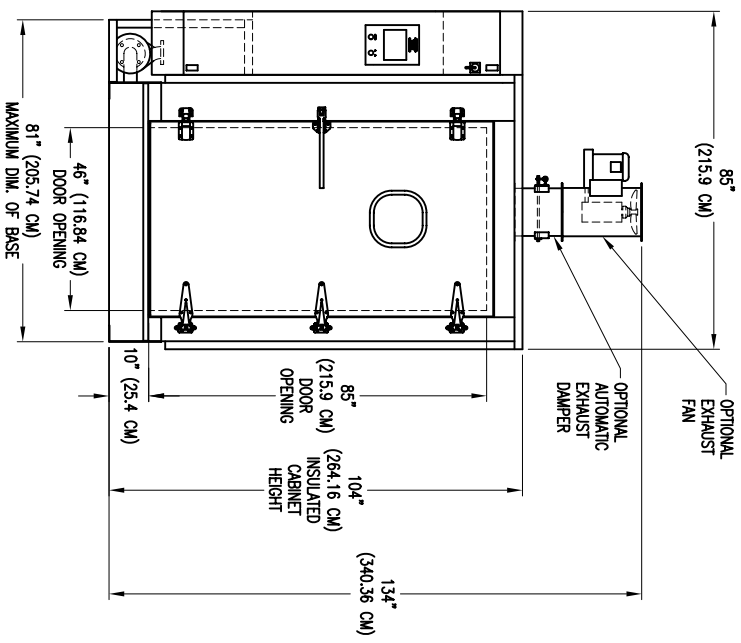


UTILITIES AND SERVICE REQUIREMENTS

ELECTRICAL	3PH, 60HZ, 12 H.P. (8.95 KW) CONNECTED LOAD
STEAM	2" (5.08 CM) FPT 30-80 PSI (206.84-551.58 KPA) 800 LBS/HR (362.88 KG/HR) PEAK FLOW RATE 800 LBS/HR (272.16 KG/HR) AVERAGE FLOW RATE
CONDENSATE	1" (2.54 CM) FPT 240 GALLONS (908.5 LITERS)/LOAD MAX
HOT WATER	1" (2.54 CM) FPT 35 PSI (241.32 KPA) 140 - 180 DEG F. (60-82.22 DEG C)
COLD WATER (OPTIONAL)	1" (2.54 CM) FPT 35 PSI (241.32 KPA) 25 GPM (94.64 LITERS/MIN) AVG FLOW
DRAIN	2" (5.08 CM) FPT, 180 DEG. F. (82.22 DEG C) MAX
EXHAUST	180 GPM (881.37 LITERS/MIN) MAX 12" (30.48 CM) DIA, 800 SCFM (22.65 CUBIC METERS/MIN)
COMPRESSED AIR	180 DEG F (82.22 DEG C) SATURATED 1/2" (1.27 CM) FPT 80 PSI (551.58 KPA) 4 SCFM (0.11 CUBIC METERS/MIN) FLOW RATE



NOTE: All drawings, descriptions, prints, specifications, etc. bearing this notice, together with the information, and ideas contained therein, are the sole and exclusive property of Schlyer Machine. Any disclosure or use thereof not authorized in writing by Schlyer Machine is unlawful and will be prosecuted to the full extent of the law.

DWG. BY: JBRKE	DATE: 7/27/06	DRAWING TITLE:	SCHLYER MACHINERY CO.
APP. BY:		RW 6290L LH CASE AND RACK WASHER	PART NO:
SCALE: 1=24	JOB NO:		6290L LH
SHEET: OF:	NEXT ASBK:	200 LAKE ST. WILSON, NY 14172	