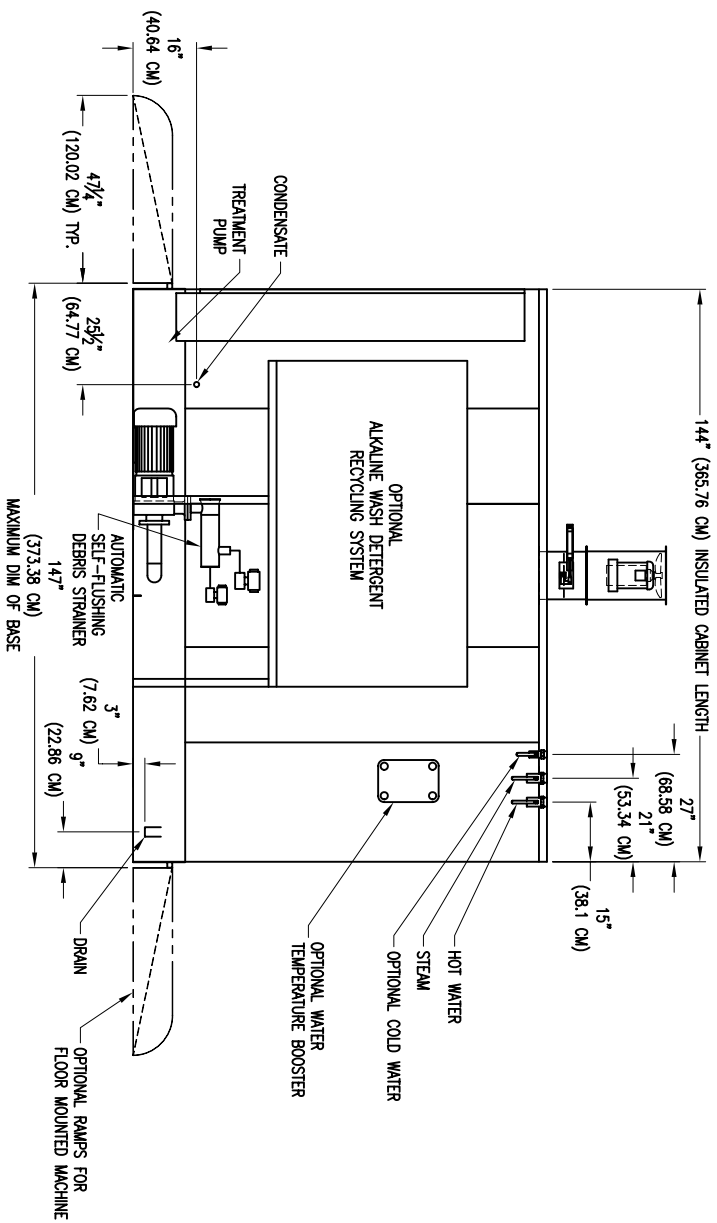
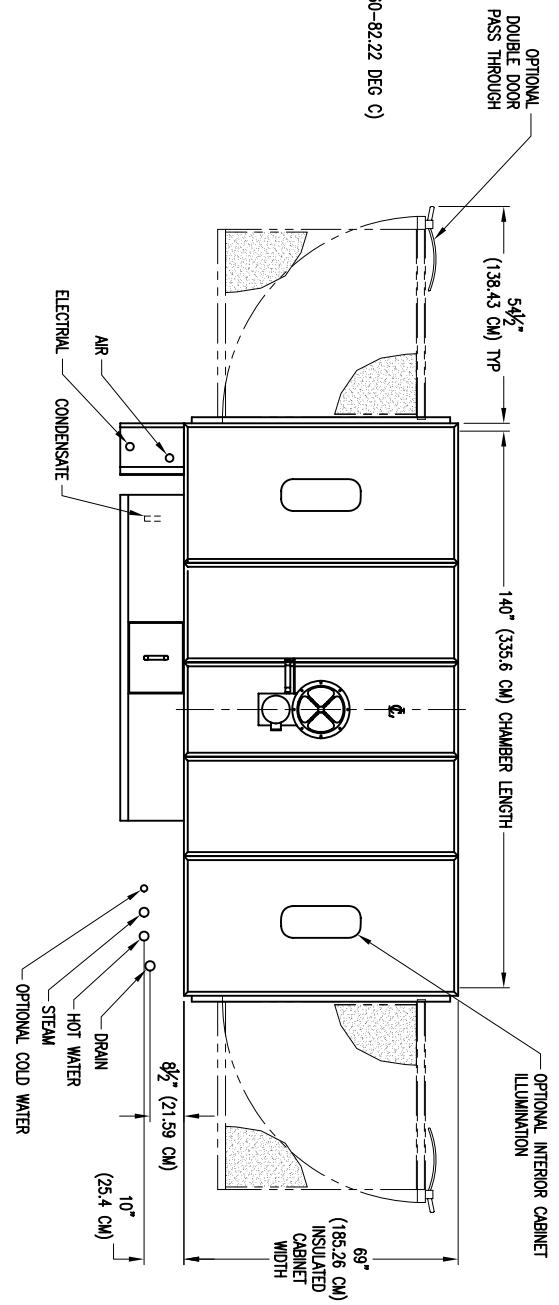
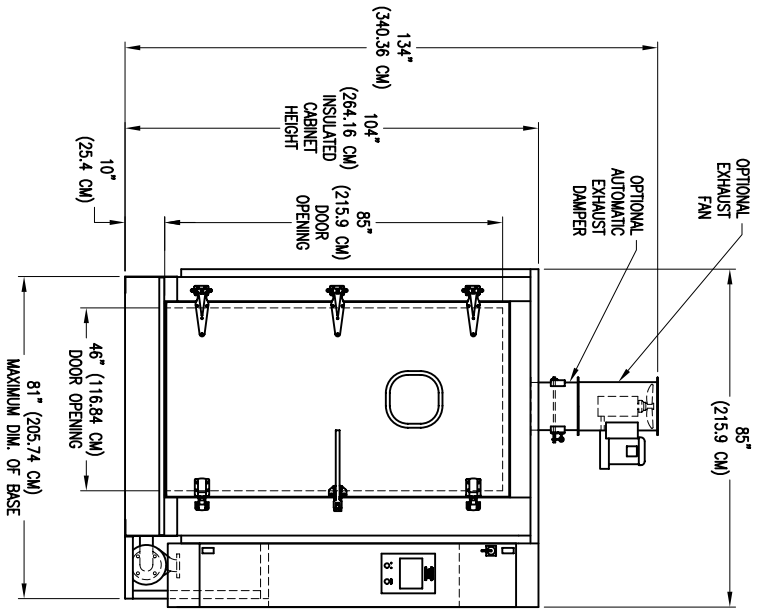


UTILITIES AND SERVICE REQUIREMENTS

- ELECTRICAL 3PH, 60HZ, 12 H.P. (8.95 KW) CONNECTED LOAD
- STEAM 2" (5.08 CM) FPT 30-80 PSI (206.84-551.58 KPA)
- CONDENSATE 800 LBS/HR (362.88 KG/HR) PEAK FLOW RATE
- HOT WATER 600 LBS/HR (272.16 KG/HR) AVERAGE FLOW RATE
- CONDENSATE 1" (2.54 CM) FPT
- HOT WATER 1" (2.54 CM) FPT 35 PSI (241.32 KPA) 140 - 180 DEG F (60-82.22 DEG C)
- COLD WATER (OPTIONAL) 1" (2.54 CM) FPT 35 PSI (241.32 KPA)
- DRAIN 25 GPM (94.64 LITERS/MIN) AVG FLOW
- EXHAUST 2" (5.08 CM) FPT, 180 DEG. F (82.22 DEG C) MAX
- COMPRESSED AIR 180 GPM (681.37 LITERS/MIN) MAX
- 12" (30.48 CM) DIA., 800 SCFM (22.65 CUBIC METERS/MIN)
- 180 DEG F (82.22 DEG C) SATURATED
- 1/2" (1.27 CM) FPT 80 PSI (82.22 KPA)
- 4 SCFM (0.11 CUBIC METERS/MIN) FLOW RATE



NOTICE: All drawings, descriptions, prints, specifications, etc. bearing this notice, together with the information, and ideas contained therein, are the sole and exclusive property of Schlyer Machine. Any disclosure or use thereof not authorized in writing by Schlyer Machine is unlawful and will be prosecuted to the full extent of the law.

DMN BR: LBRKE	DATE: 7/27/06	DRAWING TITLE:
APR BR:	DATE:	RW 6290L RH CAGE AND RACK WASHER
SCALE: 1=24	JOB NO:	SCHLYER MACHINERY CO.
SHEET: OF:	NEXT ASHB:	200 LAKE ST. WILSON, NY 14172
		PART NO: 6290L RH