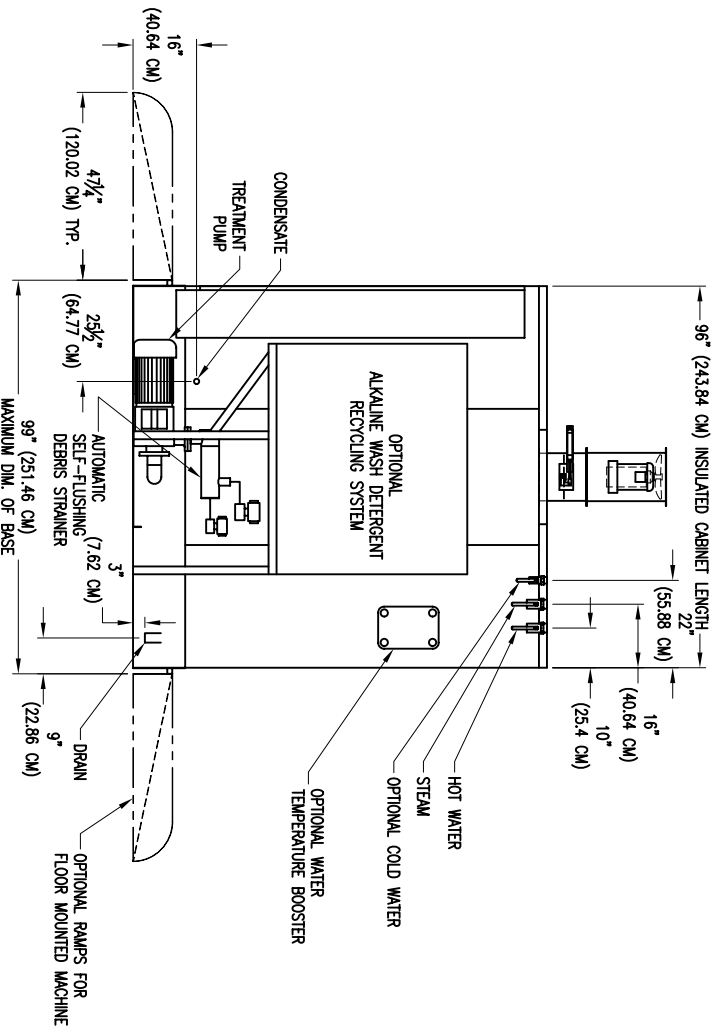
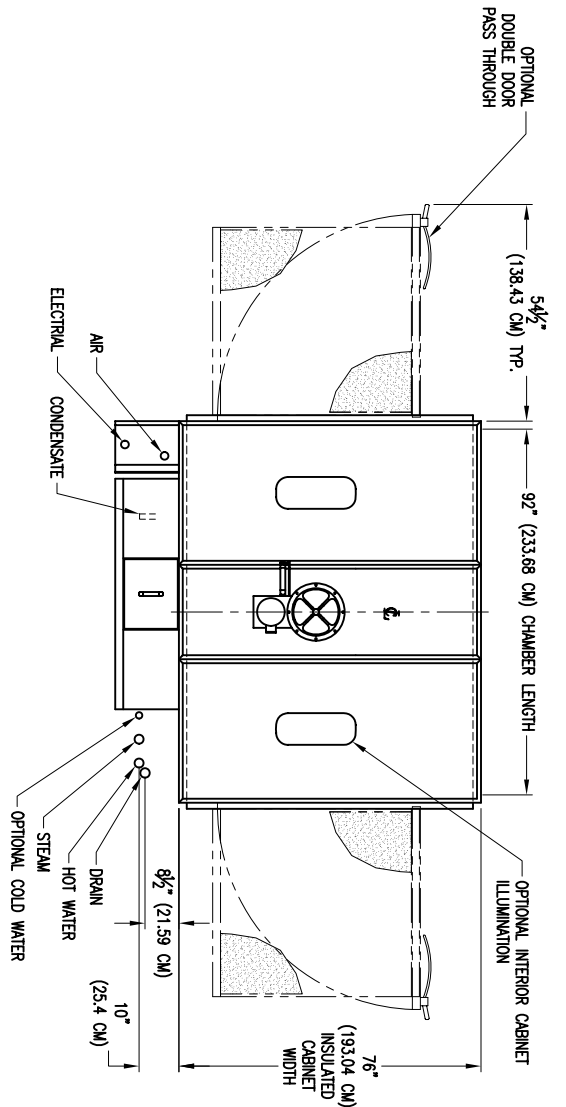
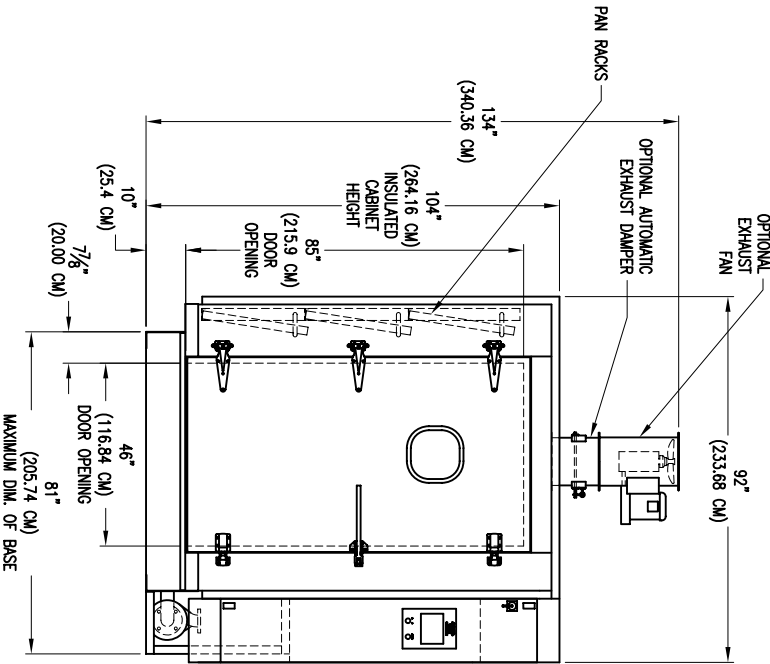


UTILITIES AND SERVICE REQUIREMENTS

- ELECTRICAL
3 PH, 60 HZ, CONNECTED 12 H.P. (8.95 KW) LOAD
- STEAM
1 1/2" (3.81 CM) FPT 30-80 PSI (206.84-551.58 KPA)
600 LBS/HR (272.16 KG/HR) PEAK FLOW RATE
400 LBS/HR (181.44 KG/HR) AVERAGE FLOW RATE
- CONDENSATE
1" (2.54 CM) FPT
- HOT WATER
1 1/2" (3.81 CM) FPT 35 PSI (241.32 KPA) 180 DEG. F. (82.22 DEG C)
270 GALLONS (1022.06 LITERS) MAX. / LOAD CONSUMPTION
- COLD WATER (OPTIONAL)
1" (2.54 CM) FPT 35 PSI (241.32 KPA) 50 DEG. F. (10 DEG C)
25 GPM (94.46 LITERS/MIN) PEAK FLOW RATE
2" (5.08 CM) FPT, 190 DEG. F. (87.79 DEG C) MAX. TEMPERATURE
120 GPM (454.25 LITERS/MIN) FLOW RATE
12" (30.48 CM) DIA.
600 CFM (16.99 CUBIC METERS/MIN) FLOW RATE
- DRAIN
1/2" (1.27 CM) FPT 80 PSI (551.59 KPA)
- EXHAUST
4 SCFM (0.11 CUBIC METERS/MIN) FLOW RATE
- COMPRESSED AIR



NOTE: All drawings, descriptions, prints, specifications, etc. bearing this notice, together with the information, and ideas contained therein, are the sole and exclusive property of Schlyer Machine. Any disclosure or use thereof not authorized in writing by Schlyer Machine is unlawful and will be prosecuted to the full extent of the law.

DMN BR: JLBKKE	DATE: 7/27/06	DRAWING TITLE:	RH CAGE, RACK, AND PAN WASHER
APR BR:	DATE:	PART NO.:	6290P RH
SCALE: 1=24	JOB NO.:	SCHLYER MACHINERY CO.	
SHEET: OF:	NEXT ASH:	200 LAKE ST. WILSON, NY 14172	