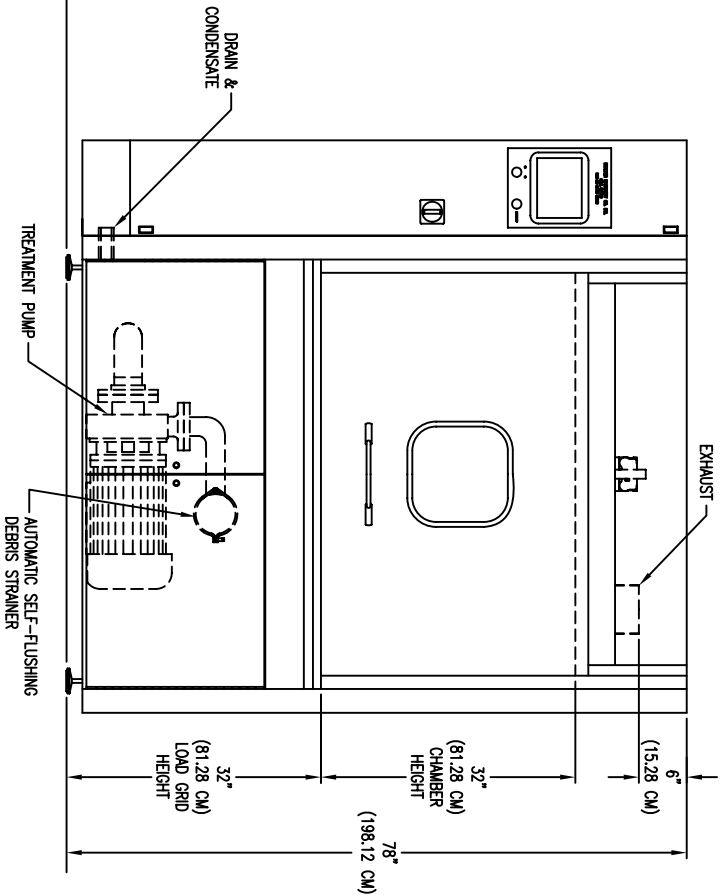
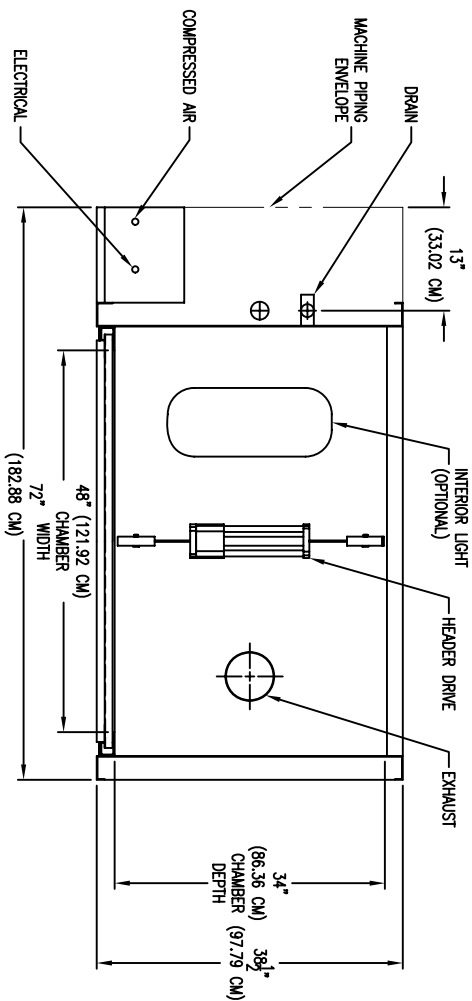
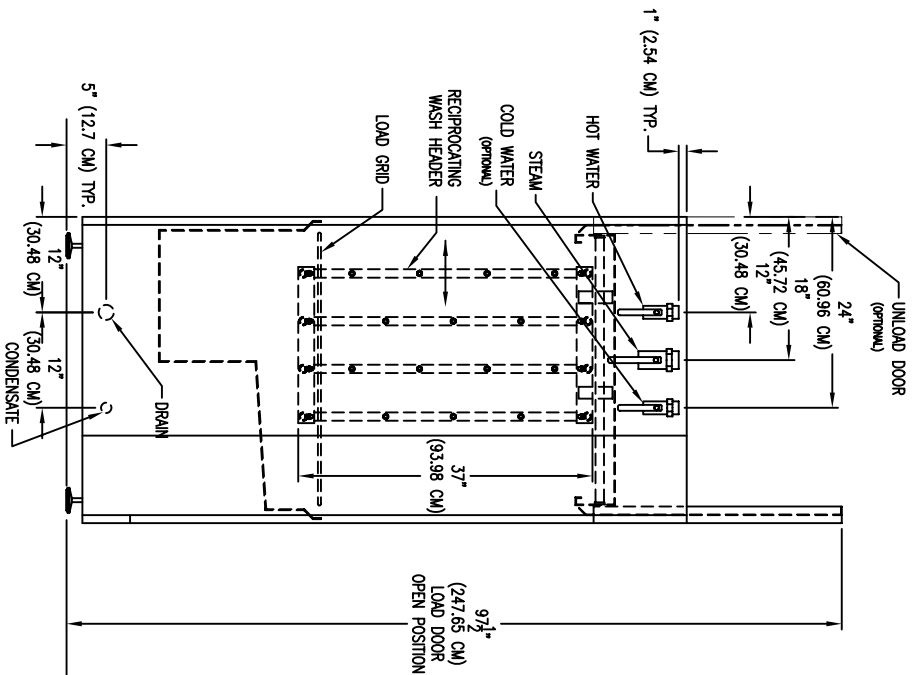


UTILITIES AND SERVICE REQUIREMENTS

- ELECTRICAL 208/360/480 3 PH, 60 HZ, CONNECTED 8 H.P. (5.97 KW) LOAD
- ELECTRIC HEAT (OPTIONAL) 208/360/480 3 PH, 60 HZ, 24 KW
- STEAM (OPTIONAL) 1 1/2" (3.81 CM) FPT 30-80 PSI (206.84-551.58 KPA) LOAD 400 LBS/HR (181.44 KG/HR) PEAK FLOW RATE 300 LBS/HR (136.08 KG/HR) AVERAGE FLOW RATE
- CONDENSATE 1" (2.54 CM) FPT 35 PSI (241.32 KPA) 180 DEG. F. (82.22 DEG C)
- HOT WATER 1" (2.54 CM) FPT 35 PSI (241.32 KPA) 180 DEG. F. (82.22 DEG C) 90 GALLONS (340.89 L) MAX. / LOAD CONSUMPTION
- COLD WATER (OPTIONAL) 3/4" (1.91 CM) FPT 35 PSI (241.32 KPA) 50 DEG. F. (10 DEG C) 15 GPM (56.78 LITERS/MIN) AVERAGE FLOW
- DRAIN 1 1/2" (3.81 CM) FPT 190 DEG. F. (87.78 DEG C) MAX. TEMPERATURE 60 GPM (227.12 LITERS/MIN) FLOW RATE
- EXHAUST 6" (15.24 CM) DIA. 180 DEG. F. (82.22 DEG C) SATURATED 200 CFM (5.66 CUBIC METERS/MIN) FLOW RATE
- COMPRESSED AIR 1/2" (1.27 CM) FPT 80 PSI (551.58 KPA) 4 SCFM (0.11 CUBIC METERS/MIN) FLOW RATE



NOTICE: All drawings, descriptions, prints, specifications, etc. bearing this notice, together with the information, and ideas contained therein, are the sole and exclusive property of Schlyer Machine. Any disclosure or use thereof not authorized in writing by Schlyer Machine is unlawful and will be prosecuted to the full extent of the law.

DWG BY: GREG B	DATE: 2/28/06	DRAWING TITLE: MODEL CBW 1026 LH CAGE AND BOTTLE WASHER
APR BY:	DATE:	PART NO: CBW1026 LH
SCALE: 1" = 1'	JOB NO:	
SHEET: 1 OF 1	NEXT ASH:	