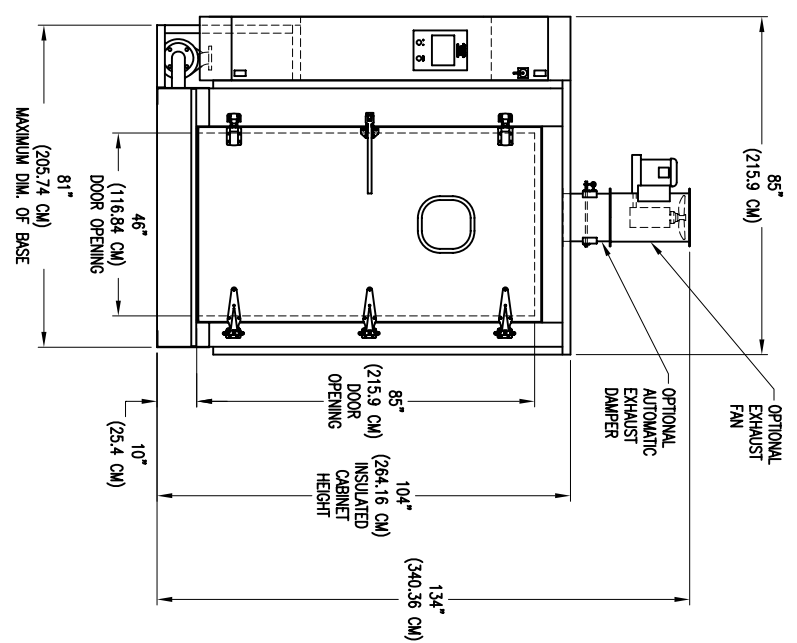


- UTILITIES AND SERVICE REQUIREMENTS**
- ELECTRICAL
    - 3 PH, 60 HZ, CONNECTED 12 H.P. (8.95 KW) LOAD
    - 1 1/2" (3.81 CM) FPT 30-80 PSI (206.84-551.58 KPA)
  - STEAM
    - 600 LBS./HR (272.16 KG/HR) PEAK FLOW RATE
    - 400 LBS./HR (181.44 KG/HR) AVERAGE FLOW RATE
  - CONDENSATE
    - 1" (2.54 CM) FPT
    - 1 1/2" (3.81 CM) FPT 35 PSI (241.32 KPA) 180 DEG. F. (82.22 DEG. C)
    - 270 GALLONS (1022.06 L) MAX. / LOAD CONSUMPTION
  - HOT WATER
    - 1" (2.54 CM) FPT 35 PSI (241.32 KPA) 50 DEG. F. (10 DEG. C)
    - 25 GPM (94.46 LITERS/MIN) PEAK FLOW RATE
    - 2" (5.08 CM) FPT, 190 DEG. F. (87.79 DEG. C) MAX. TEMPERATURE
  - COLD WATER (OPTIONAL)
    - 120 GPM (454.25 LITERS/MIN) FLOW RATE
    - 12" (30.48 CM) DIA.
    - 600 CFM (16.99 CUBIC METERS/MIN) FLOW RATE
    - 1/2" (1.27 CM) FPT 80 PSI (551.58 KPA)
  - DRAIN
    - 4 SCFM (0.11 CUBIC METERS/MIN) FLOW RATE
  - EXHAUST
    - 1/2" (1.27 CM) FPT 80 PSI (551.58 KPA)
    - 4 SCFM (0.11 CUBIC METERS/MIN) FLOW RATE
  - COMPRESSED AIR
    - 1/2" (1.27 CM) FPT 80 PSI (551.58 KPA)
    - 4 SCFM (0.11 CUBIC METERS/MIN) FLOW RATE



NOTICE: All drawings, descriptions, prints, specifications, etc. bearing this notice, together with the information, and ideas contained therein, are the sole and exclusive property of Schlyer Machine. Any disclosure or use thereof not authorized in writing by Schlyer Machine is unlawful and will be prosecuted to the full extent of the law.

DWN BY: JBRKKE APR BR: _____ SCALE: 1/2" = 1'-0" SHEET: 08 OF: 08 DATE: 7/28/05 JOB NO: _____ NEXT ASHB: _____	DRAWING TITLE: <b>SCHLYER MACHINERY CO.</b> RW 6290 LH CAGE AND RACK WASHER 200 LAKE ST. WILSON, NY 14172	PART NO: <b>6290 LH</b>
--	--	----------------------------