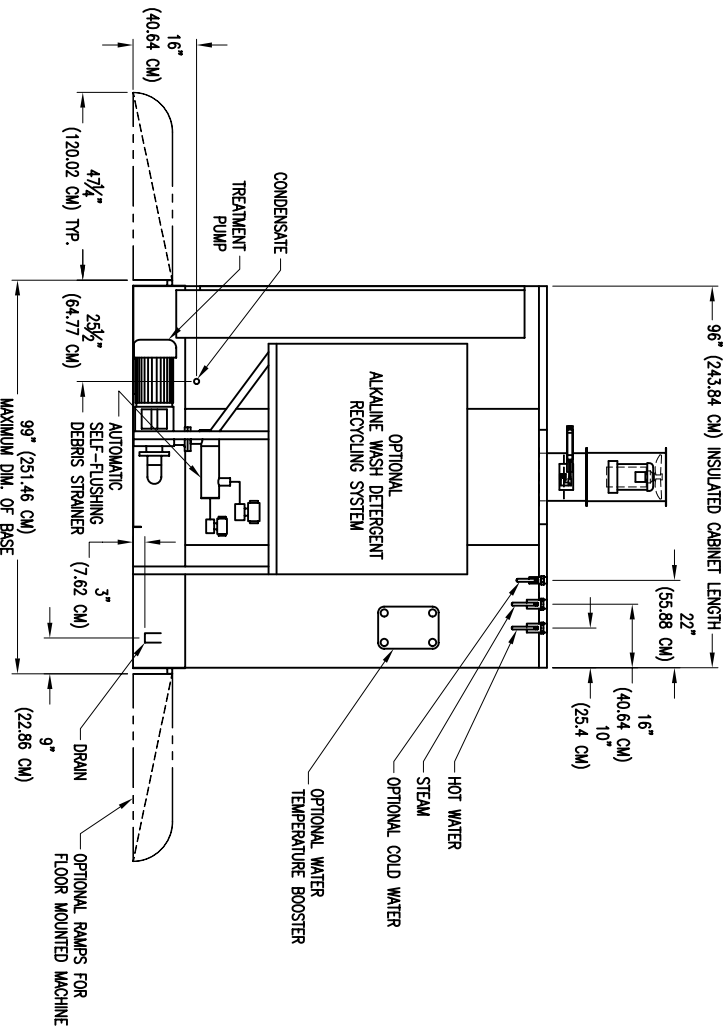
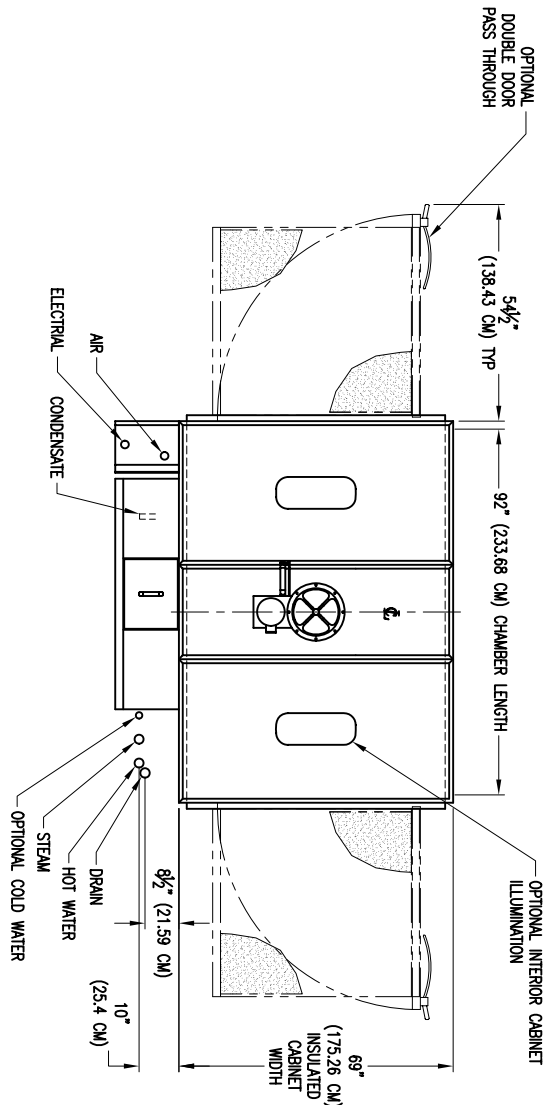
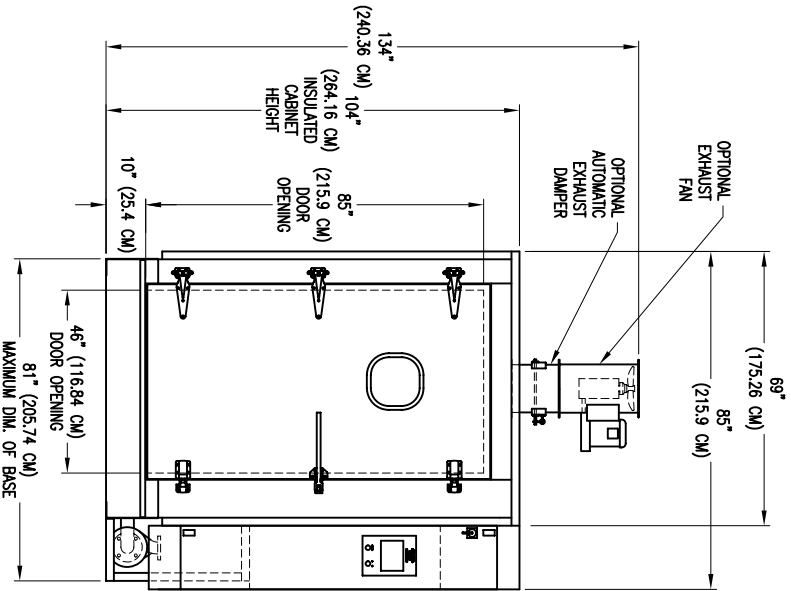


UTILITIES AND SERVICE REQUIREMENTS

- ELECTRICAL
  - 3 PH, 60 HZ, CONNECTED 12 H.P. (8.95 KW) LOAD
  - 1 1/2" (3.81 CM) FPT 30-80 PSI (206.84-551.58 KPA)
  - 600 LBS/HR (272.16 KG/HR) PEAK FLOW RATE
  - 400 LBS/HR (181.44 KG/HR) AVERAGE FLOW RATE
- CONDENSATE
  - 1" (2.54 CM) FPT
  - 1 1/2" (3.81 CM) FPT 35 PSI (241.32 KPA) 180 DEG. F. (82.22 DEG C)
  - 270 GALLONS (1022.06 LITERS) MAX. / LOAD CONSUMPTION
- HOT WATER
  - 1" (2.54 CM) FPT 35 PSI (241.32 KPA) 50 DEG. F. (10 DEG C)
  - 25 GPM (94.64 LITERS/MIN) PEAK FLOW RATE
  - 2" (5.08 CM) FPT, 190 DEG. F. (87.79 DEG C) MAX. TEMPERATURE
  - 120 GPM (454.25 LITERS/MIN) FLOW RATE
  - 12" (30.48 CM) DIA.
- COLD WATER (OPTIONAL)
  - 600 CFM (16.99 CUBIC METERS/MIN) FLOW RATE
  - 1/2" (1.27 CM) FPT 80 PSI (551.58 KPA)
  - 4 SCFM (0.11 CUBIC METERS/MIN) FLOW RATE
- EXHAUST
  - OPTIONAL EXHAUST FAN
  - OPTIONAL AUTOMATIC EXHAUST DAMPER
- COMPRESSED AIR
  - OPTIONAL EXHAUST FAN
  - OPTIONAL AUTOMATIC EXHAUST DAMPER



NOTICE: All drawings, descriptions, prints, specifications, etc. bearing this notice, together with the information, and ideas contained therein, are the sole and exclusive property of Schlyer Machinery. Any disclosure or use thereof not authorized in writing by Schlyer Machinery is unlawful and will be prosecuted to the full extent of the law.

DMN BR: LJBKKE	DATE: 7/28/05	DRAWING TITLE:
APR BR:	DATE:	RW 6290 RH OAGE AND RACK WASHER
SCALE: 1=24	JOB NO:	<b>SCHLYER MACHINERY CO.</b>
SHEET: OF:	NEXT ASH:	200 LAKE ST. WILSON, NY 14172
		PART NO: 6290 RH