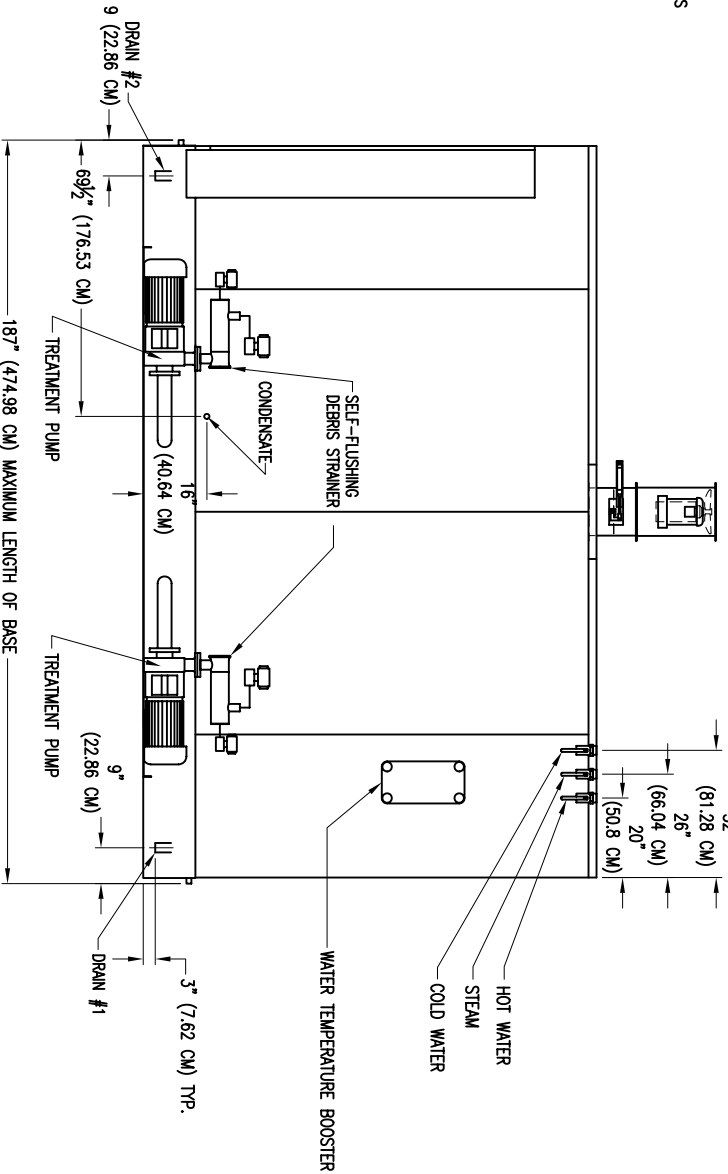
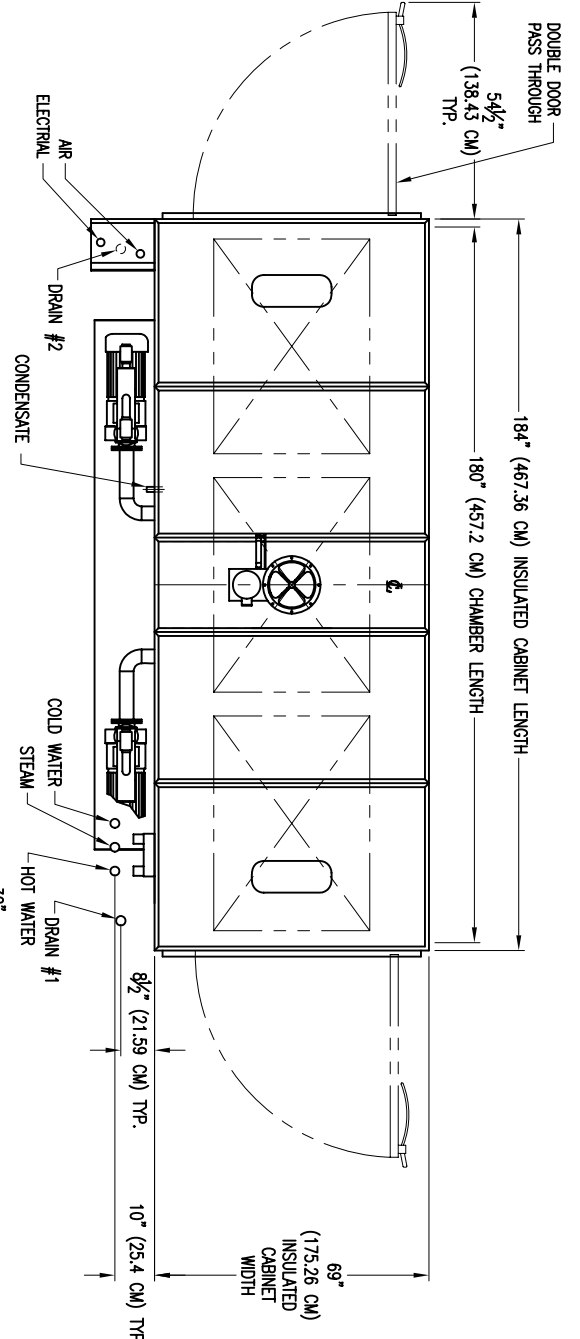
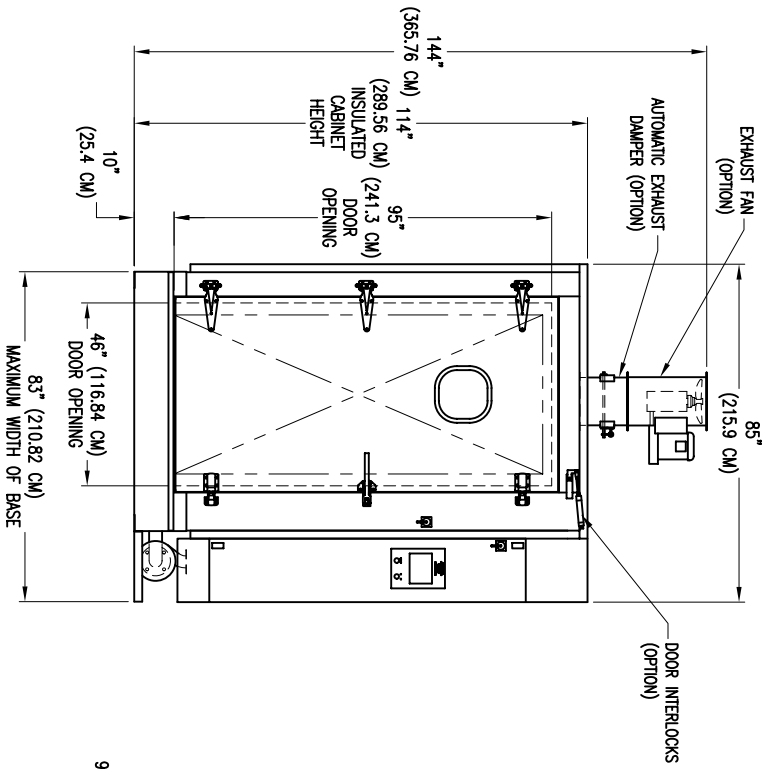


UTILITIES AND SERVICE REQUIREMENTS

- ELECTRICAL 3 PH, 60 HZ, 22 H.P. (16.41 KW) CONNECTED LOAD
- STEAM 2" (5.08 CM) PPT 30-80 PSI (206.84-551.58 KPA)
- CONDENSATE 900 LBS/HR (408.23 KG/HR) PEAK FLOW
- HOT WATER 700 LBS/HR (317.52 KG/HR) AVERAGE FLOW
- COLD WATER 1 1/2" (3.81 CM) PPT
- DRAIN #1 1 1/2" (3.81 CM) PPT 35 PSI (241.32 KPA) 140 - 180 DEG F. (60-82.22 DEG C) 380 GALLONS (1438 LITERS) / LOAD
- DRAIN #2 1" (2.54 CM) PPT 35 PSI (241.32 KPA)
- EXHAUST 35 GPM (132.49 LITERS/MIN) AVG. FLOW
- 2" (5.08 CM) PPT, 180 DEG F. (82.22 DEG C) MAX. TEMPERATURE
- 120 GPM (454.25 LITERS/MIN) FLOW
- 12" (30.48 CM) DIA., 600 SCFM (16.99 CUBIC METERS/MIN) FLOW
- 180 DEG F. (82.22 DEG C) SATURATED



NOTICE: All drawings, descriptions, prints, specifications, etc. bearing this notice, together with the information, and ideas contained therein, are the sole and exclusive property of Schlyer Machine. Any disclosure or use thereof not authorized in writing by Schlyer Machine is unlawful and will be prosecuted to the full extent of the law.

DWG. BY: JLBKKE DATE: 7/29/05
 APP. BY: DATE:
 SCALE: 1=24 JOB NO.:
 SHEET: OF: NEXT ASSEMBLY:

DRAWING TITLE:
 RW 6290PC3 RH PRIMATE CASE WASHER
 SCHLYER MACHINERY CO.
 200 LAKE ST. WILSON, NY 14172

PART NO.:
 6290PC3 RH